

Myth-dispelling theories like these are woven throughout the displays, from the red and white Welsh dragons in the atrium to the Asian Lung on the far side of the exhibit space.

But mythbusting isn't the singular focus of the exhibit. Situated around the dragon displays are interactive stations celebrating the mythology and magic of the creatures. Near the Asian Lung, there's a shadow puppet theater. In the hall connecting the atrium and other exhibit spaces,

"Every generation loves dragons."

Samantha Szesciorka
Assistant curator

visitors can stop to make a crayon rubbing of the dragon of their choice from detailed plates embedded in a table. Other elements, like a display of chained boxes that rattle and emit growls are there for the thrill factor. Things like this and a virtual reality dragon-riding experience—13 and

The Lost World of Dragons is on exhibit at the Wilbur D. May Museum, 1595 N. Sierra St., until May 12. Learn more about museum hours and ticket prices here: bit.ly/2MJw7IC.

older only—are meant to help the exhibit appeal to people of all ages.

"Some content may be above the little kids, but we don't want parents—we don't want anyone—sitting on the sidelines," Carlson said. "It's like with the *Toytopia* exhibit—at first blush, you may think, 'Oh, it's a kids' exhibit.' But we wanted it to have toys that are from my generation and my dad's generation, so there'd be a lot of good sharing opportunities."

Another way Szesciorka plans to attract all-ages visitors is with extended, after-dark hours on certain days.

"People can come in and see it glowing in the dark, sort of after-dark dragons," she said. "I think that will be a really fun way for people to see it, too."

She's also planning an adults-only night. This one's likely to catch the attention of those who've been patiently waiting nearly two years for the final season of the aforementioned dragon-centric HBO series.

"So it'll be a *Game of Thrones*-themed adult night," Szesciorka said. "And it'll be before the next and final season premieres. ... It's going to be so fun." □



An animatronic red Welsh dragon.

MORE ENTERTAINMENT



LIFEHOUSE

February 17, 2019



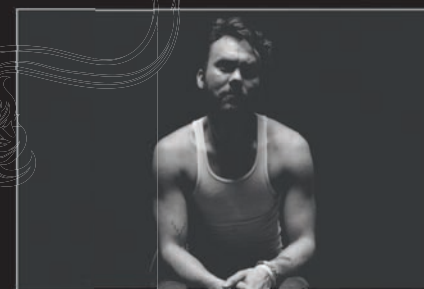
AN EVENING WITH MOE

March 7, 2019



WFC 100

March 9, 2019



SHAKEY GRAVES WITH CAMERON NEAL

March 17, 2019



CHEECH & CHONG WITH SPECIAL GUEST SHELBY CHONG

March 23, 2019



DIRTY HEADS

May 17, 2019



MORE FUN. MORE VALUE. MORE VARIETY.

1-800-BE-LUCKY | MONTBLEURESORT.COM
55 HIGHWAY 50, STATELINE, NV 89449

Tickets may be purchased at Montbleu Box Office, at all Ticketmaster outlets, or by calling Ticketmaster at 800.745.3000. Must be 21 or older to gamble. Montbleu reserves all rights.

MONTBLEU
RESORT CASINO & SPA
LAKE TAHOE